



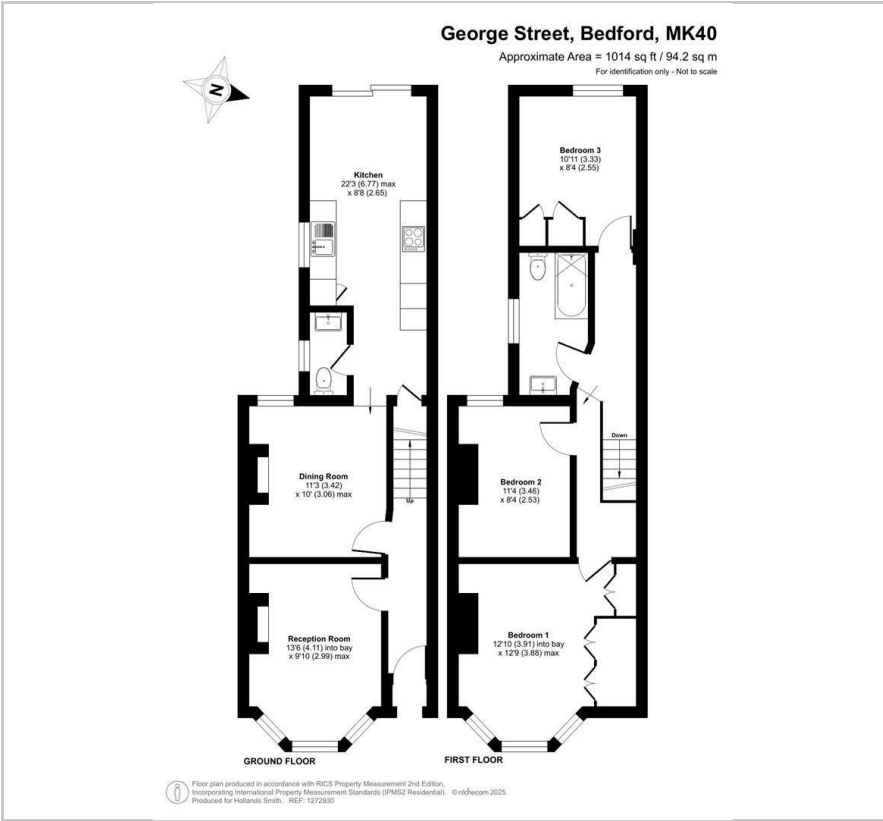
8 George Street

, Bedford, MK40 3SG

£410,000



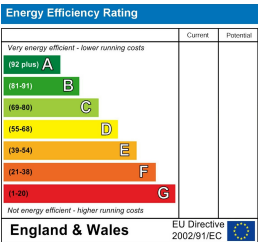
Floor Plan



Area Map



Energy Efficiency Graph



Viewing

Please contact our Bedford Office on 01234 216612 if you wish to arrange a viewing appointment for this property or require further information.

- Newly Refurbished Period
- Close to Russell Park & the Home
- Three Bedrooms
- Extensively Fitted Kitchen/Breakfast Room
- New Bathroom Suite
- Ground Floor Cloakroom
- Walled, West Facing Garden
- No Onward Chain

This bay fronted period home lies very close to Russell Park and has been comprehensively renovated in recent months. The fully refurbished accommodation features an extensively fitted open plan kitchen, a new bathroom suite, separate reception rooms and a ground floor cloakroom. The property enjoys a light, sunny aspect having a walled, west facing garden and a south facing side elevation which brings much natural light into the house. Located just a few yards from Russell Park with the picturesque Embankment beyond attractive river walks are on the doorstep. Popular with individuals and families alike, the 'Castle Quarter' provides a range of independent coffee shops, delis, pubs and eateries together with a highly regarded primary school which is also within the vicinity. Council Tax Band: C EPC Rating: F Newly refurbished, this light and spacious period home is in 'show home' condition. The kitchen features integrated appliances and there are wide patio doors opening to the garden. All of the windows are uPVC double glazed and there are electric panel heaters throughout. The property is available with no onward chain.



163 Castle Road, MK40 3RT

Tel: 01234 216612

www.hollandsmith.co.uk

These particulars are believed to be accurate but are not guaranteed to be so. They are intended only as a general guide and cannot be constructed as any form of contract, warranty or offer. No apparatus, equipment, fittings or services have been tested and so we cannot verify that they are in working order. The details are issued on the strict understanding that any negotiations in respect of the property are conducted through Hollands Smith Estate Agents and Valuers.